

Hampshire Water Transfer and Water Recycling Project Environmental Statement – Figure 19.2 Groundwater features

VOLUME NUMBER: 6

PLANNING INSPECTORATE SCHEME NUMBER: WA010002

APPLICATION DOCUMENT REFERENCE: 6.3

APFP REGULATION: 5(2)(a)

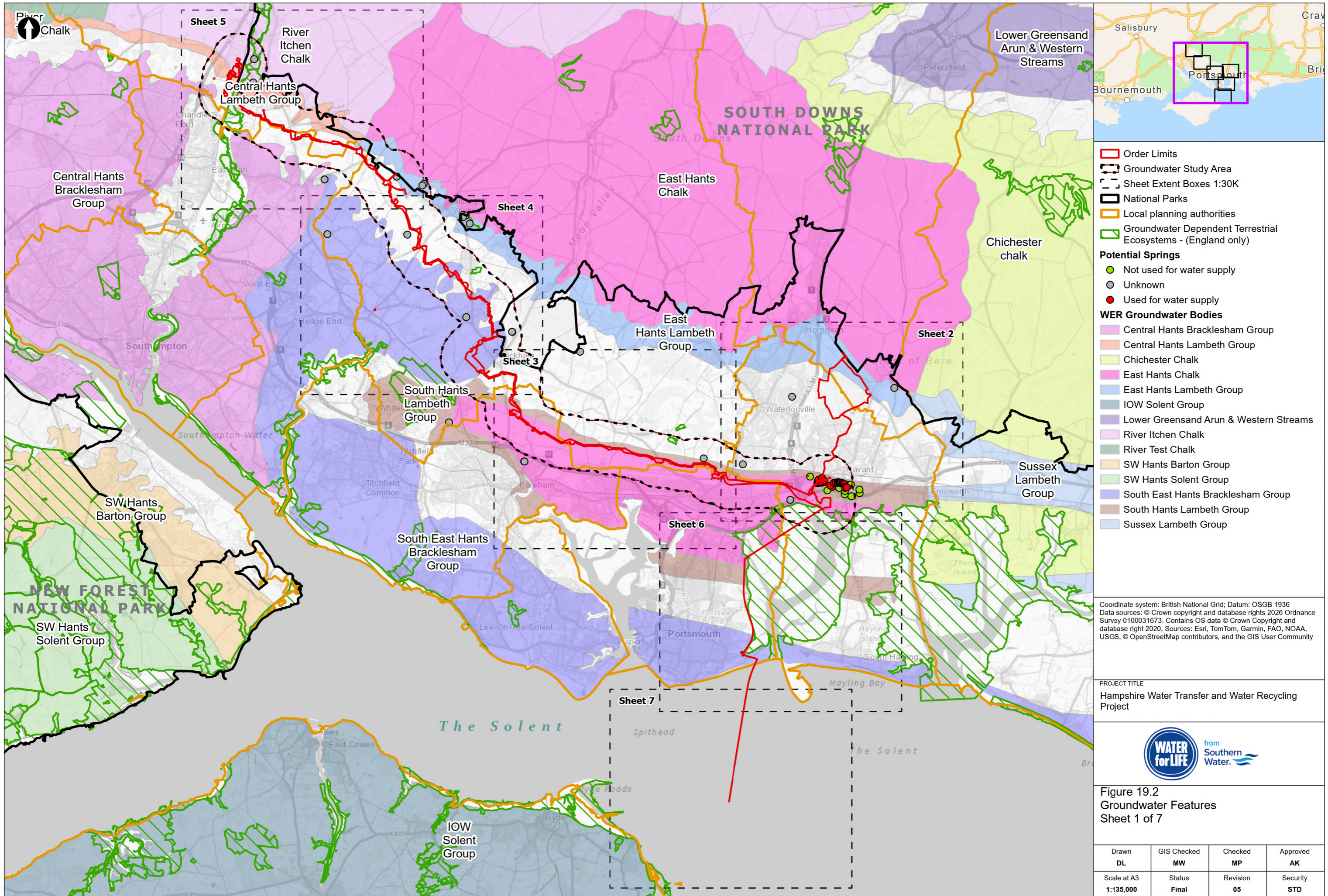
May 2026

Version 0



from
**Southern
Water** 

The Southern Water logo consists of the words 'Southern' and 'Water' stacked vertically in a blue, sans-serif font. To the right of the text is a graphic of three stylized, wavy blue lines representing water.



- Order Limits
- Groundwater Study Area
- Sheet Extent Boxes 1:30K
- National Parks
- Local planning authorities
- Groundwater Dependent Terrestrial Ecosystems - (England only)
- Potential Springs**
- Not used for water supply
- Unknown
- Used for water supply
- WER Groundwater Bodies**
- Central Hants Bracklesham Group
- Central Hants Lambeth Group
- Chichester Chalk
- East Hants Chalk
- East Hants Lambeth Group
- IOW Solent Group
- Lower Greensand Arun & Western Streams
- River Itchen Chalk
- River Test Chalk
- SW Hants Barton Group
- SW Hants Solent Group
- South East Hants Bracklesham Group
- South Hants Lambeth Group
- Sussex Lambeth Group

Coordinate system: British National Grid; Datum: OSGB 1936
 Data sources: © Crown copyright and database rights 2026 Ordnance Survey 0100031673. Contains OS data © Crown Copyright and database right 2020. Sources: Esri, TomTom, Garmin, FAO, NOAA, USGS, © OpenStreetMap contributors, and the GIS User Community

PROJECT TITLE
 Hampshire Water Transfer and Water Recycling Project

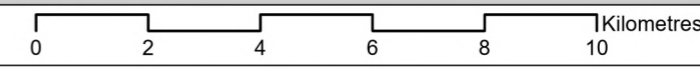


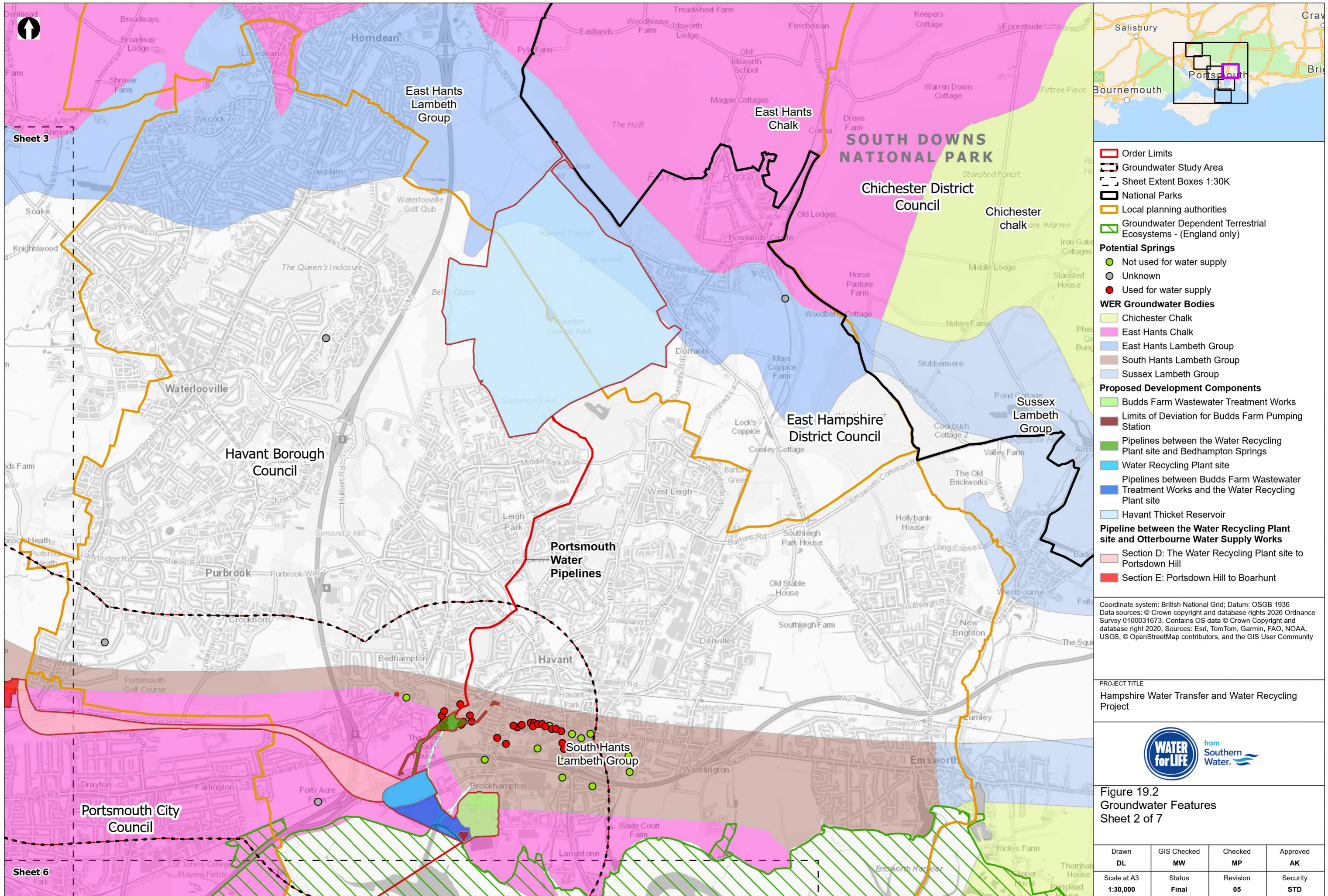
Figure 19.2
 Groundwater Features
 Sheet 1 of 7

Drawn DL	GIS Checked MW	Checked MP	Approved AK
Scale at A3 1:135,000	Status Final	Revision 05	Security STD

Drawing Number
PC5223-RHD-ES-ZZ-D-Z-0082

© Southern Water 2026
 This document is issued for the party which commissioned it and for specific purposes connected with the captioned project only. It should not be relied upon by any other party or used for any other purpose. We accept no responsibility for the consequences of this document being relied upon by any other party, or being used for any other purpose, or containing any error or omission which is due to an error or omission in data supplied to us by other parties.





- Order Limits
- Groundwater Study Area
- Sheet Extent Boxes 1:30K
- National Parks
- Local planning authorities
- Groundwater Dependent Terrestrial Ecosystems - (England only)
- Potential Springs**
- Not used for water supply
- Unknown
- Used for water supply
- WER Groundwater Bodies**
- Chichester Chalk
- East Hants Chalk
- East Hants Lambeth Group
- South Hants Lambeth Group
- Sussex Lambeth Group
- Proposed Development Components**
- Budds Farm Wastewater Treatment Works
- Limits of Deviation for Budds Farm Pumping Station
- Pipelines between the Water Recycling Plant site and Bedhampton Springs
- Water Recycling Plant site
- Pipelines between Budds Farm Wastewater Treatment Works and the Water Recycling Plant site
- Havant Thicket Reservoir
- Pipeline between the Water Recycling Plant site and Otterbourne Water Supply Works**
- Section D: The Water Recycling Plant site to Portsdown Hill
- Section E: Portsdown Hill to Boarhunt

Coordinate system: British National Grid; Datum: OSGB 1936
 Data sources: © Crown copyright and database rights 2026 Ordnance Survey 0100031673. Contains OS data © Crown Copyright and database right 2020, Sources: Esri, TomTom, Garmin, FAO, NOAA, USGS, © OpenStreetMap contributors, and the GIS User Community

PROJECT TITLE
 Hampshire Water Transfer and Water Recycling Project

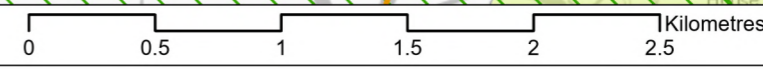


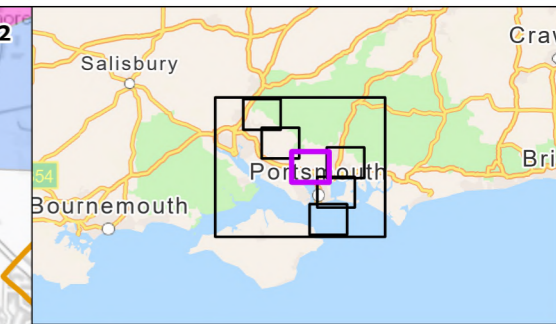
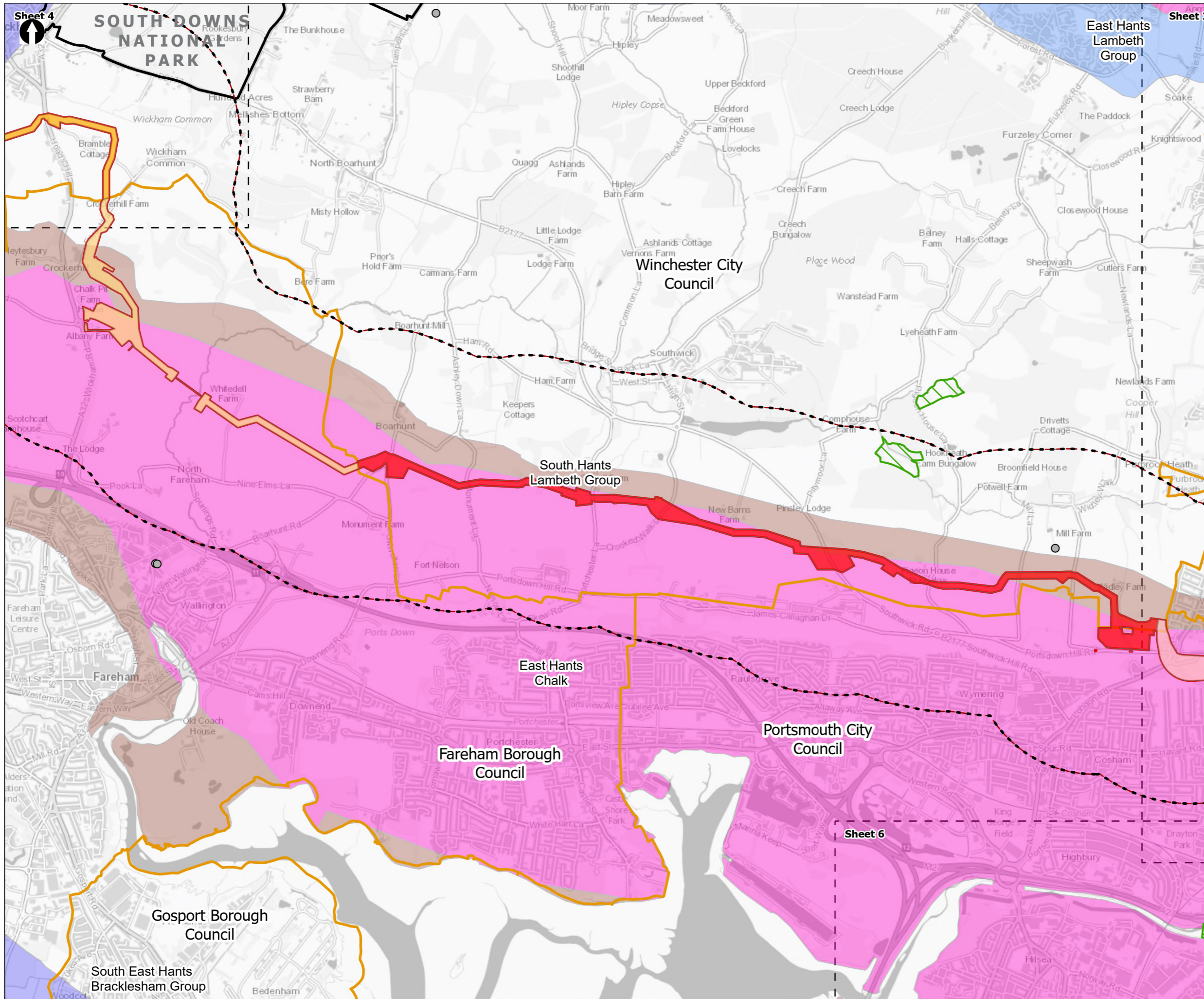
Figure 19.2
 Groundwater Features
 Sheet 2 of 7

Drawn DL	GIS Checked MW	Checked MP	Approved AK
Scale at A3 1:30,000	Status Final	Revision 05	Security STD

Drawing Number
 PC5223-RHD-ES-ZZ-D-Z-0082

© Southern Water 2026
 This document is issued for the party which commissioned it and for specific purposes connected with the captioned project only. It should not be relied upon by any other party or used for any other purpose. We accept no responsibility for the consequences of this document being relied upon by any other party, or being used for any other purpose, or containing any error or omission which is due to an error or omission in data supplied to us by other parties.





- Order Limits
- Groundwater Study Area
- Sheet Extent Boxes 1:30K
- National Parks
- Local planning authorities
- Groundwater Dependent Terrestrial Ecosystems - (England only)
- Potential Springs**
- Unknown
- WER Groundwater Bodies**
- East Hants Chalk
- East Hants Lambeth Group
- South East Hants Bracklesham Group
- South Hants Lambeth Group
- Pipeline between the Water Recycling Plant site and Otterbourne Water Supply Works**
- Section D: The Water Recycling Plant site to Portsdown Hill
- Section E: Portsdown Hill to Boarhunt
- Section F: Boarhunt to Crockerhill
- Section G: Crockerhill to Wickham

Coordinate system: British National Grid; Datum: OSGB 1936
 Data sources: © Crown copyright and database rights 2026 Ordnance Survey 0100031673. Contains OS data © Crown Copyright and database right 2020, Sources: Esri, TomTom, Garmin, FAO, NOAA, USGS, © OpenStreetMap contributors, and the GIS User Community

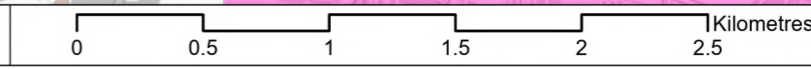
PROJECT TITLE
 Hampshire Water Transfer and Water Recycling Project

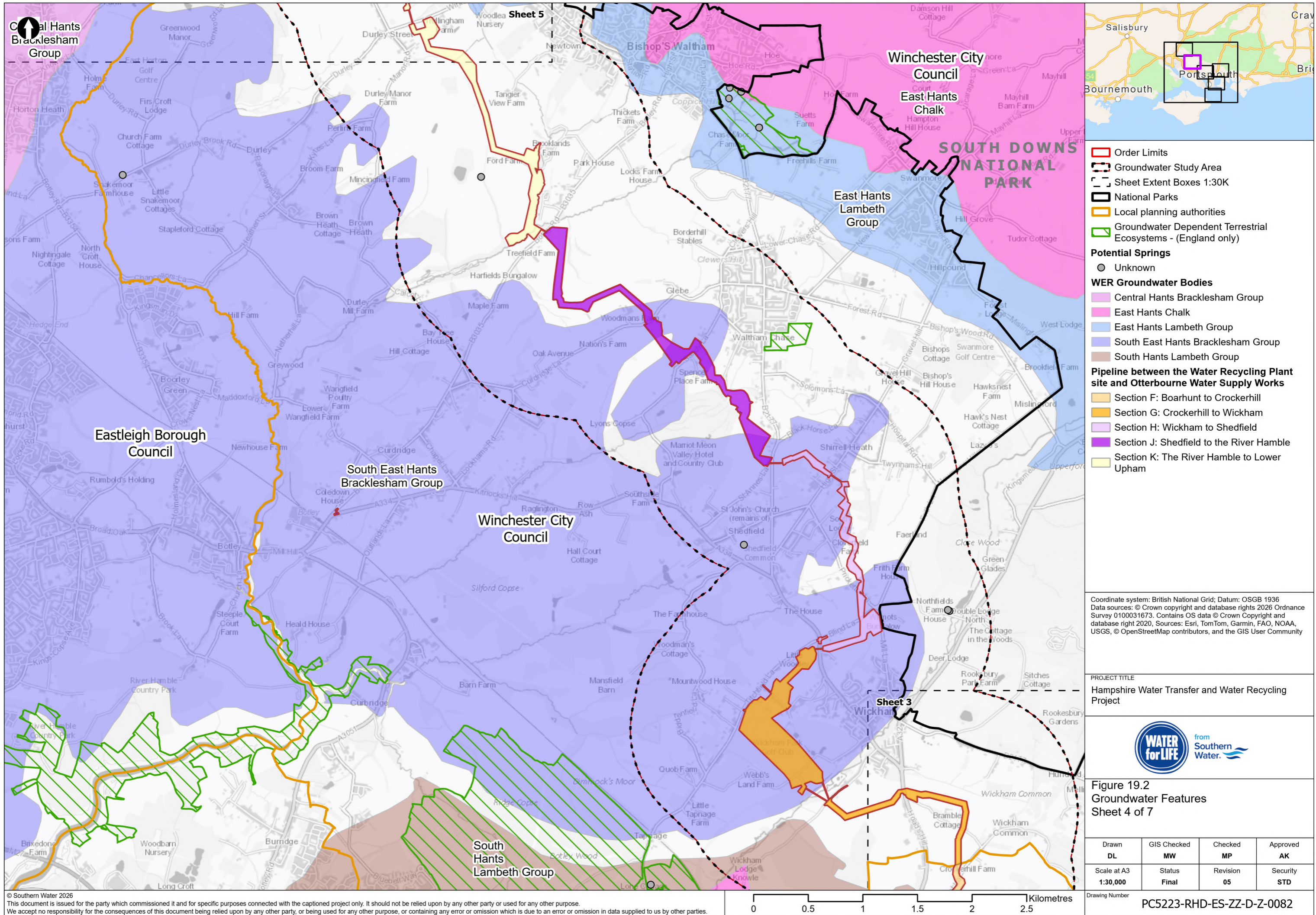


Figure 19.2
 Groundwater Features
 Sheet 3 of 7

Drawn DL	GIS Checked MW	Checked MP	Approved AK
Scale at A3 1:30,000	Status Final	Revision 05	Security STD

Drawing Number
PC5223-RHD-ES-ZZ-D-Z-0082





- Order Limits
 - Groundwater Study Area
 - Sheet Extent Boxes 1:30K
 - National Parks
 - Local planning authorities
 - Groundwater Dependent Terrestrial Ecosystems - (England only)
- Potential Springs**
- Unknown
- WER Groundwater Bodies**
- Central Hants Bracklesham Group
 - East Hants Chalk
 - East Hants Lambeth Group
 - South East Hants Bracklesham Group
 - South Hants Lambeth Group
- Pipeline between the Water Recycling Plant site and Otterbourne Water Supply Works**
- Section F: Boarhunt to Crockerhill
 - Section G: Crockerhill to Wickham
 - Section H: Wickham to Shedfield
 - Section J: Shedfield to the River Hamble
 - Section K: The River Hamble to Lower Upham

Coordinate system: British National Grid; Datum: OSGB 1936
 Data sources: © Crown copyright and database rights 2026 Ordnance Survey 0100031673. Contains OS data © Crown Copyright and database right 2020, Sources: Esri, TomTom, Garmin, FAO, NOAA, USGS, © OpenStreetMap contributors, and the GIS User Community

PROJECT TITLE
 Hampshire Water Transfer and Water Recycling Project



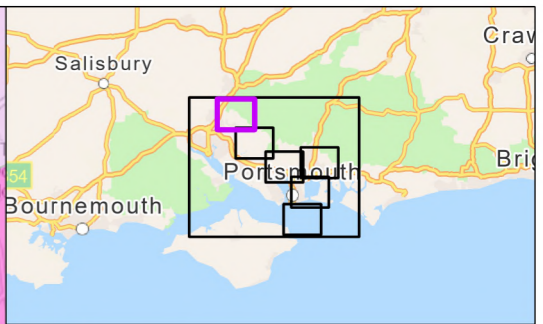
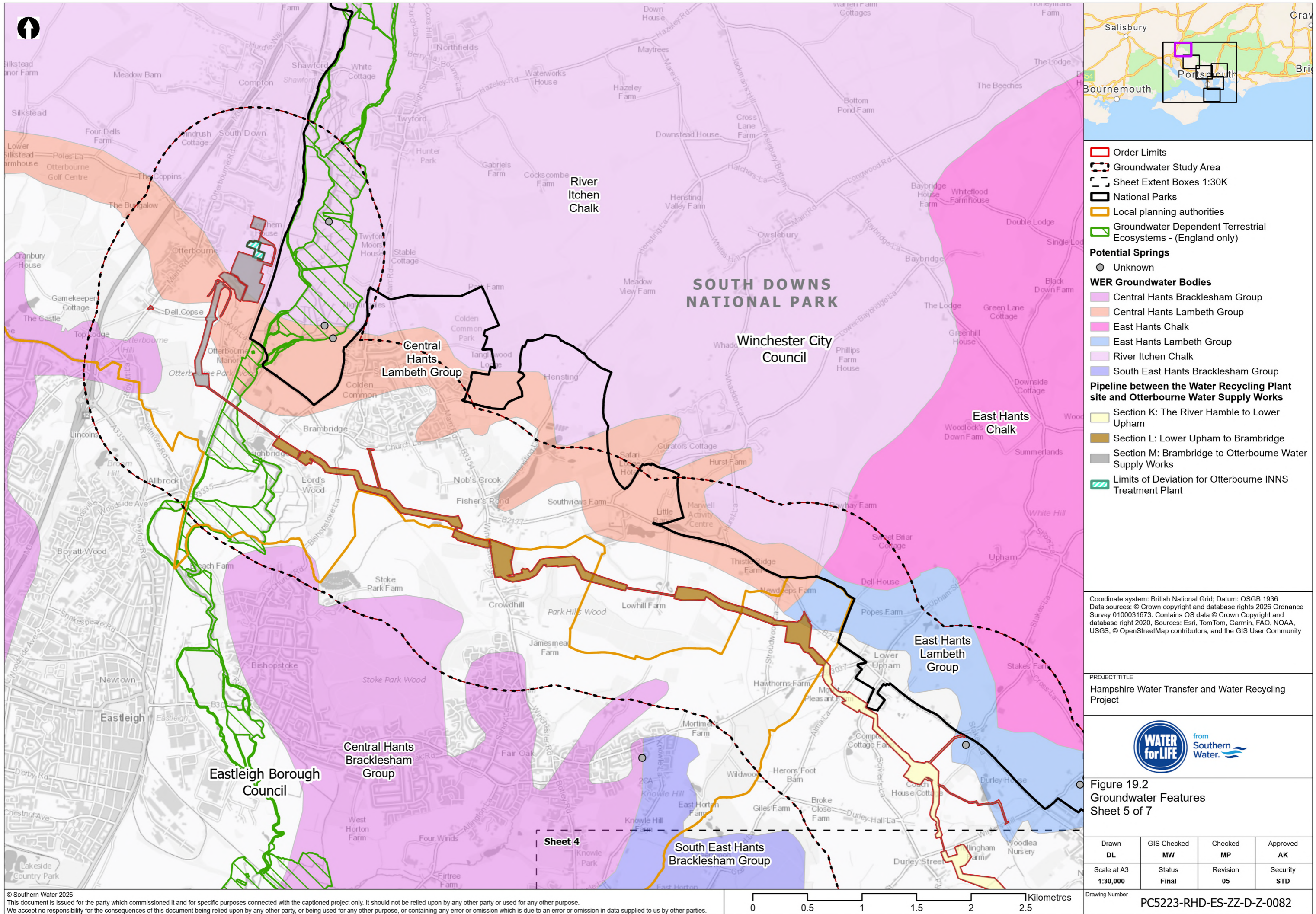
Figure 19.2
 Groundwater Features
 Sheet 4 of 7

Drawn DL	GIS Checked MW	Checked MP	Approved AK
Scale at A3 1:30,000	Status Final	Revision 05	Security STD

Drawing Number
PC5223-RHD-ES-ZZ-D-Z-0082

© Southern Water 2026
 This document is issued for the party which commissioned it and for specific purposes connected with the captioned project only. It should not be relied upon by any other party or used for any other purpose.
 We accept no responsibility for the consequences of this document being relied upon by any other party, or being used for any other purpose, or containing any error or omission which is due to an error or omission in data supplied to us by other parties.





- Order Limits
- Groundwater Study Area
- Sheet Extent Boxes 1:30K
- National Parks
- Local planning authorities
- Groundwater Dependent Terrestrial Ecosystems - (England only)
- Potential Springs**
- Unknown
- WER Groundwater Bodies**
- Central Hants Bracklesham Group
- Central Hants Lambeth Group
- East Hants Chalk
- East Hants Lambeth Group
- River Itchen Chalk
- South East Hants Bracklesham Group
- Pipeline between the Water Recycling Plant site and Otterbourne Water Supply Works**
- Section K: The River Hamble to Lower Upham
- Section L: Lower Upham to Brambridge
- Section M: Brambridge to Otterbourne Water Supply Works
- Limits of Deviation for Otterbourne INNS Treatment Plant

Coordinate system: British National Grid; Datum: OSGB 1936
 Data sources: © Crown copyright and database rights 2026 Ordnance Survey 0100031673. Contains OS data © Crown Copyright and database right 2020. Sources: Esri, TomTom, Garmin, FAO, NOAA, USGS, © OpenStreetMap contributors, and the GIS User Community

PROJECT TITLE
 Hampshire Water Transfer and Water Recycling Project

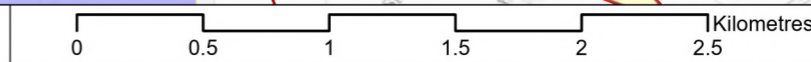


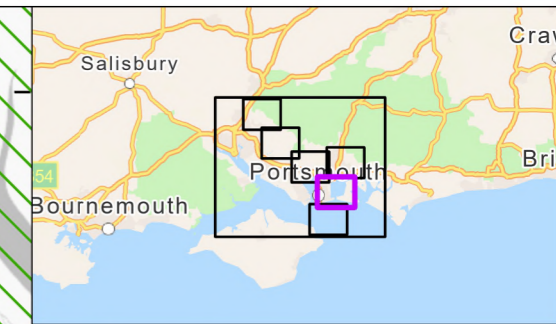
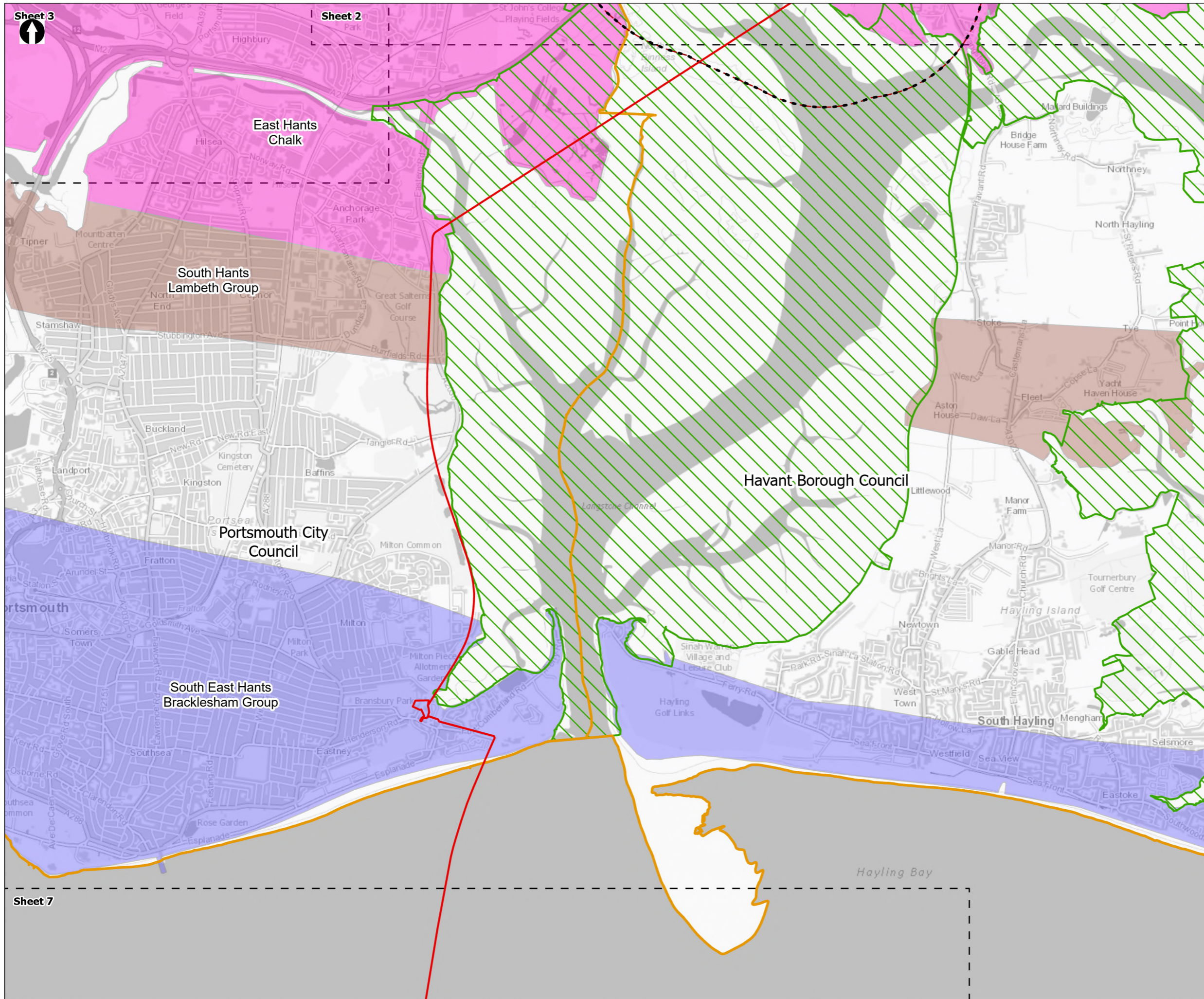
Figure 19.2
 Groundwater Features
 Sheet 5 of 7

Drawn DL	GIS Checked MW	Checked MP	Approved AK
Scale at A3 1:30,000	Status Final	Revision 05	Security STD

Drawing Number
PC5223-RHD-ES-ZZ-D-Z-0082

© Southern Water 2026
 This document is issued for the party which commissioned it and for specific purposes connected with the captioned project only. It should not be relied upon by any other party or used for any other purpose.
 We accept no responsibility for the consequences of this document being relied upon by any other party, or being used for any other purpose, or containing any error or omission which is due to an error or omission in data supplied to us by other parties.





- Order Limits
 - Groundwater Study Area
 - Sheet Extent Boxes 1:30K
 - Local planning authorities
 - Groundwater Dependent Terrestrial Ecosystems - (England only)
- WER Groundwater Bodies**
- East Hants Chalk
 - South East Hants Bracklesham Group
 - South Hants Lambeth Group

Coordinate system: British National Grid; Datum: OSGB 1936
 Data sources: © Crown copyright and database rights 2026 Ordnance Survey 0100031673. Contains OS data © Crown Copyright and database right 2020. Sources: Esri, TomTom, Garmin, FAO, NOAA, USGS, © OpenStreetMap contributors, and the GIS User Community

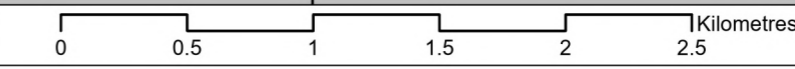
PROJECT TITLE
 Hampshire Water Transfer and Water Recycling Project



Figure 19.2
 Groundwater Features
 Sheet 6 of 7

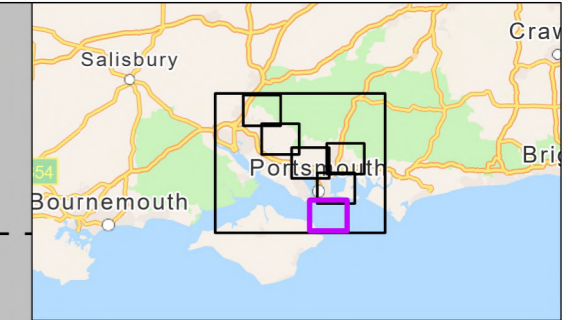
Drawn DL	GIS Checked MW	Checked MP	Approved AK
Scale at A3 1:30,000	Status Final	Revision 05	Security STD

Drawing Number
PC5223-RHD-ES-ZZ-D-Z-0082

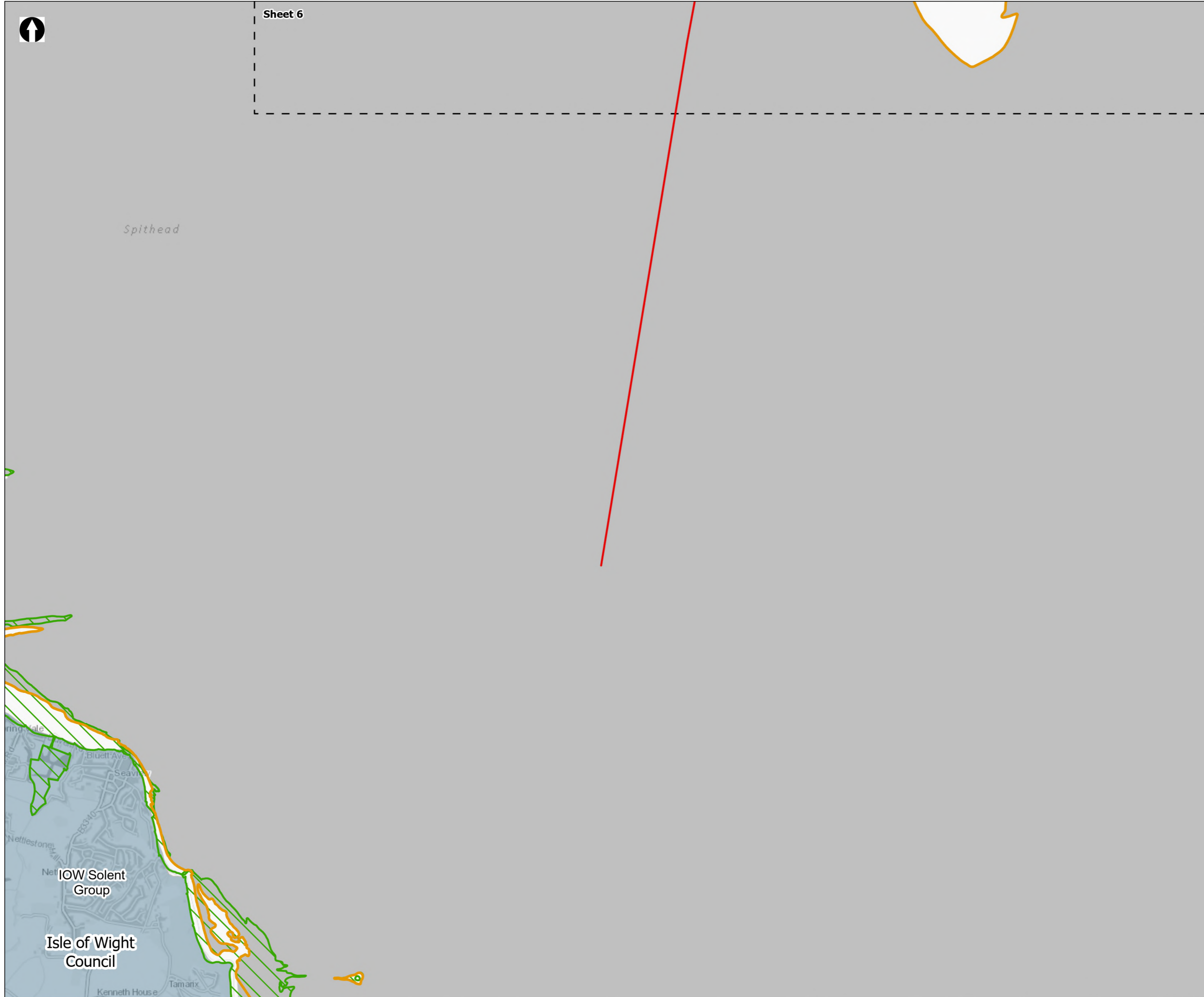




Sheet 6



- Order Limits
 - Sheet Extent Boxes 1:30K
 - Local planning authorities
 - Groundwater Dependent Terrestrial Ecosystems - (England only)
- WER Groundwater Bodies**
- IOW Solent Group



Coordinate system: British National Grid; Datum: OSGB 1936
 Data sources: © Crown copyright and database rights 2026 Ordnance Survey 0100031673. Contains OS data © Crown Copyright and database right 2020, Sources: Esri, TomTom, Garmin, FAO, NOAA, USGS, © OpenStreetMap contributors, and the GIS User Community

PROJECT TITLE
 Hampshire Water Transfer and Water Recycling Project



Figure 19.2
 Groundwater Features
 Sheet 7 of 7

Drawn DL	GIS Checked MW	Checked MP	Approved AK
Scale at A3 1:30,000	Status Final	Revision 05	Security STD

